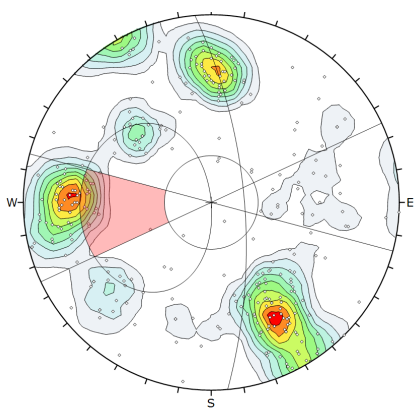


Kuala Lumpur ONE DAY WORKSHOP

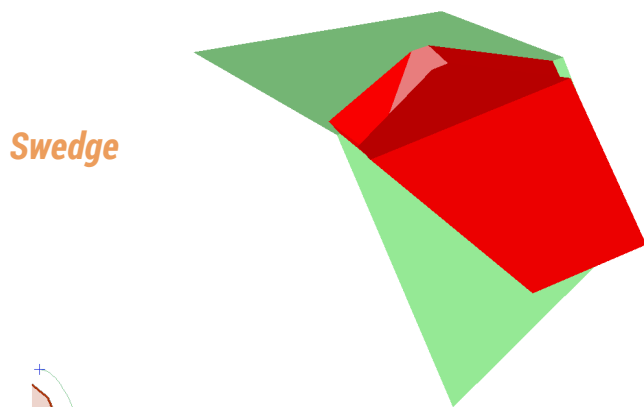
Rock Slope Engineering

The objective of this course is to provide a background on numerical modelling for rock slope stability analysis using various Rocscience software tools (*Dips*, *RocPlane*, *Swedge*, *RocFall*). Get the most out of the Rocscience rock slope stability suite through a balanced mixture of lectures and hands-on computer analysis using practical examples collected

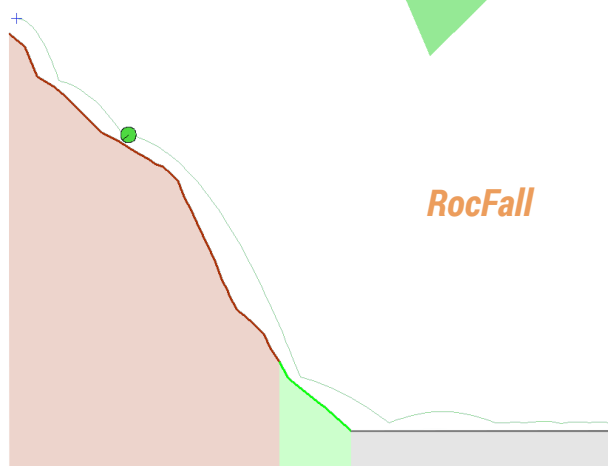
October 13, 2017



Dips



Swedge



RocFall

Module I: Introduction to Discontinuities Data

- Geological data collection
- Review of stereonets
- Kinematic analysis using *Dips*

Module II: Planar and Wedge Stability Analysis

- Wedge failure modes
- Introduction to *RocPlane*
- Introduction to *Swedge*
- Deterministic vs. probabilistic analysis

Module III: Rock Fall Analysis

- Analytical formulation of rockfall
- Rockfall movement analysis
- Introduction to *RocFall*
- Remediation and stabilization
- Advanced rockfall analysis techniques

Location:

JW Marriott Kuala Lumpur
183, Bukit Bintang Street, Bukit Bintang,
55100 Kuala Lumpur

Cost:

USD \$250 for one day
\$50 special early bird discount (valid until Sept 10th)

Contact:

Alison McQuillan, Rocscience Rep. in Australia-
Pacific
alison.mcquillan@rocscience.com