

PRODUCT ACTIVATION INSTRUCTIONS

# Flexible License

Each Server Product Key has only **one activation for one install on the server**. We ask you to make sure that the appropriate person who will be doing the installation be provided with the below information.

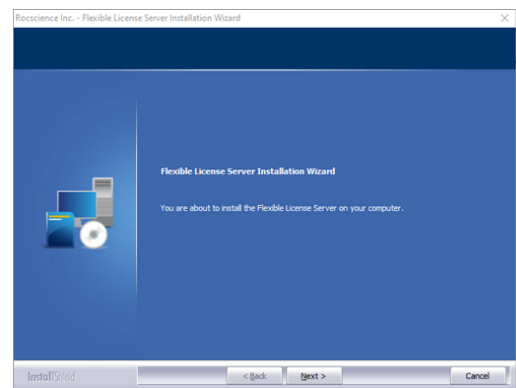
For licenses with Maintenance+, we allow a maximum of 3 transfers per year for situations like computer crashes, upgrades, etc. Please contact our Support Team for license transfer assistance by filling [this form](#).

## How to set up your Flexible License:

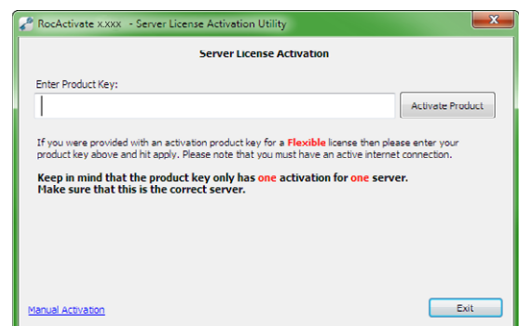
### On the server computer:

- 1.1 Install the Rocscience Flexible License Server program. The executable is for the server installation only and should not be installed on a laptop or personal computer.

**Note:** The server computer is the computer to which all the client machines running the Rocscience software will connect to validate the license. This computer should not be one of the client computers and/or a personal PC, as it must be accessible to the client computers.



- 1.2 Activate the Flexible License with your Product Key.
  - a. Open the Start menu and type "Rocscience Software Activation" into the search. Run the [Rocscience Software Activation for Server](#) utility.
  - b. Enter the **Product Key** that was provided to you by email.
  - c. Click on **Activate Product**.



❗ Failed to activate? See Manual Activation in our [Troubleshooting guide](#) for more information.

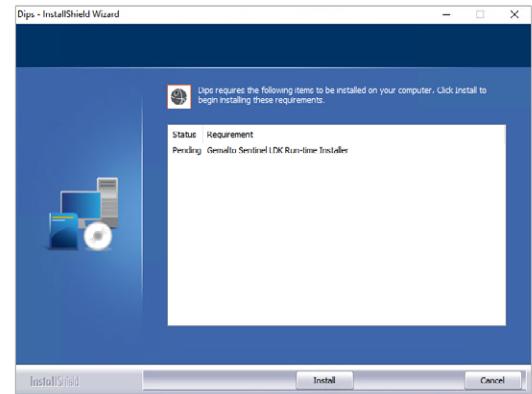
PRODUCT ACTIVATION INSTRUCTIONS

# Flexible License



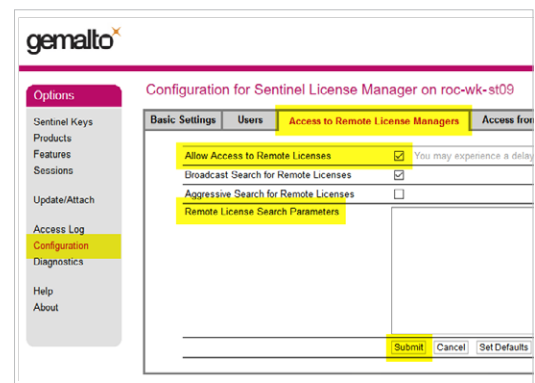
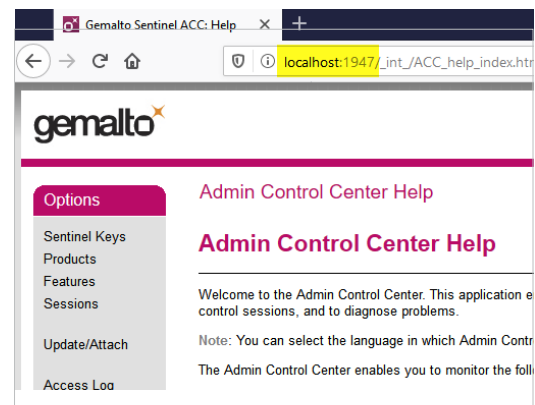
## On the client computer:

2.1 Install the purchased Rocscience program with the links provided to you by email.



2.2 Configure the client computer using the Sentinel Admin Control Center (ACC). Client configuration only needs to be done once on each client machine.

- a. Access ACC at <http://localhost:1947> in your web browser.
- b. Select **Configuration** in the Options panel.
- c. Select the **Access to Remote License Manager** tab and check **Allow Access to Remote Licenses**.
- d. If the license server is on a different subnet or WAN, you might need to specify its IP in the **Remote License Search Parameters** edit box.
- e. Click **Submit** to save your settings.

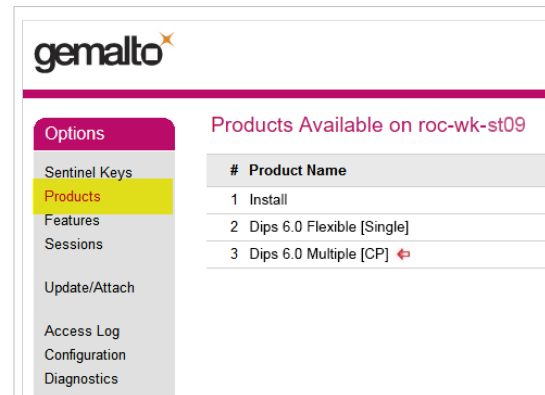


PRODUCT ACTIVATION INSTRUCTIONS

# Flexible License

**2** 2.3 In the ACC, select **Products** in the Options panel.

2.4 If the license server has been found, you will see the license(s) in the products list. You can now run your purchased Rocscience product on that machine.



## How to use a Flexible License:

### Option A: Connected to the Server

From the client computer, connect online to the server to run the Rocscience program.

### Option B: Disconnected from the Server

Prior to offline access, connect to the server from the client computer and detach a license. Once detached, you may use the Rocscience program offline on that specific client computer for the specified time period. Please see our Detaching a License guide for detailed instructions on how to detach a license.

### We're here to help!

Should you have any troubles activating your software or require more detailed instructions, please refer to our Troubleshooting guide. If the problem is not resolved, please contact us by filling [this form](#).