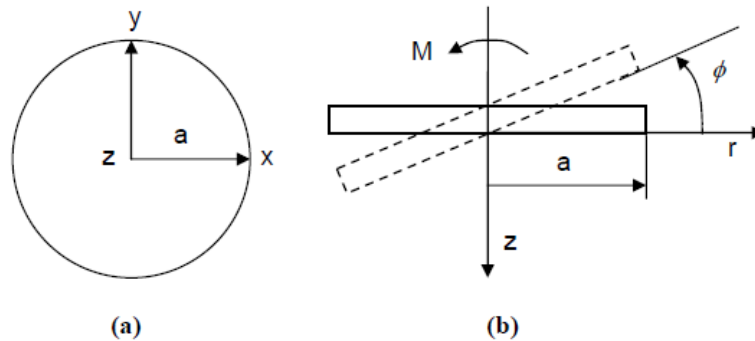


New *Settle*^{3D} and *Phase*² Verification Examples

Settle^{3D} and *Phase*² users will be interested in the new verification examples below which now have been documented

Settle^{3D}

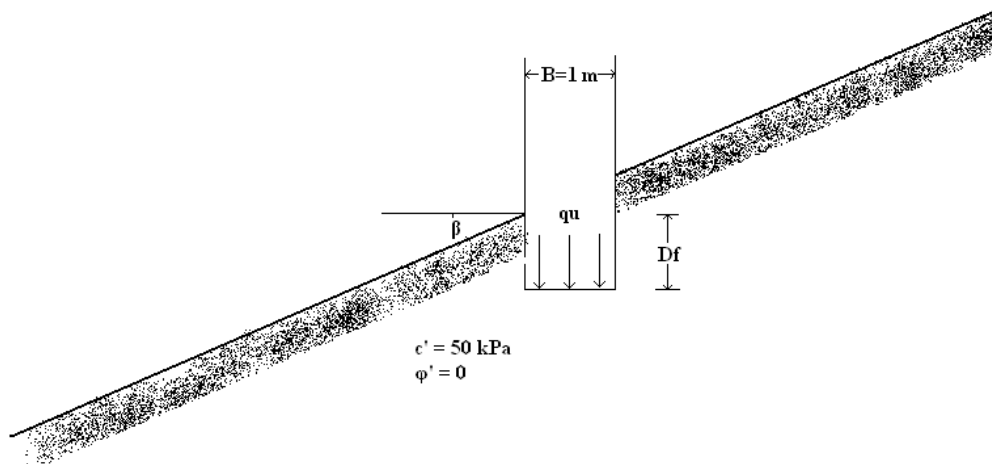
New *Settle*^{3D} verification examples have been prepared which verify results for rigid loading and the Westergaard stress solution. See verification examples #14 to #22 in the [Settle^{3D} Stress Analysis Verification manual](#).



Rotation of a rigid circular footing (verification #15)

*Phase*²

New *Phase*² verification examples have been prepared which verify results for bearing capacity problems. See verification examples #23 to #25 in the [Phase² Stress Analysis Verification Manual \(Part 2\)](#).



Bearing capacity of foundation on cohesive slope (verification # 23)