

Please disregard the Installation Instructions and the Hardlock Software sections in the *Getting Started* brochure, included in the software box. For a Commercial Network License, follow the Network License Installation Instructions outlined in this document.

# **Rocscience Product Installation Guide for Client-Server Commercial Networks**

## Table of Contents

<b>1. Introduction</b>	<b>3</b>
<b>2. Server Installation Instructions – No previous install</b>	<b>4</b>
<b>3. Client Installation Instructions</b>	<b>9</b>
<b>4. Renewing a Subscription on the Server</b>	<b>11</b>
<b>5. Major Product Upgrades on the Client</b>	<b>12</b>
<b>6. Adding a Product to a Network Installation</b>	<b>13</b>
<b>7. Migrating to a new Server</b>	<b>14</b>

## 1. Introduction

The client-server version of Rocscience software requires that you install the server configuration utility on the server. You are also required to install each of the licensed software products (i.e. Dips, Phase2, Slide) on all the clients. During installation of the server configuration utility on the server, license files for each product are written to CommonAppData folder on the server.

Rocscience network installations use the license file on the server to keep track of the maximum number of simultaneous executions of the software and software expiration. The license file is an encrypted file with a .lf extension that resides in a shared folder on the server. Each Rocscience software application has one. When a client runs the software, the software connects to the license file on the server and validates itself. In order to do this, the **client must have read, write and modify privileges for both the license file and the shared folder in which the license file resides.**

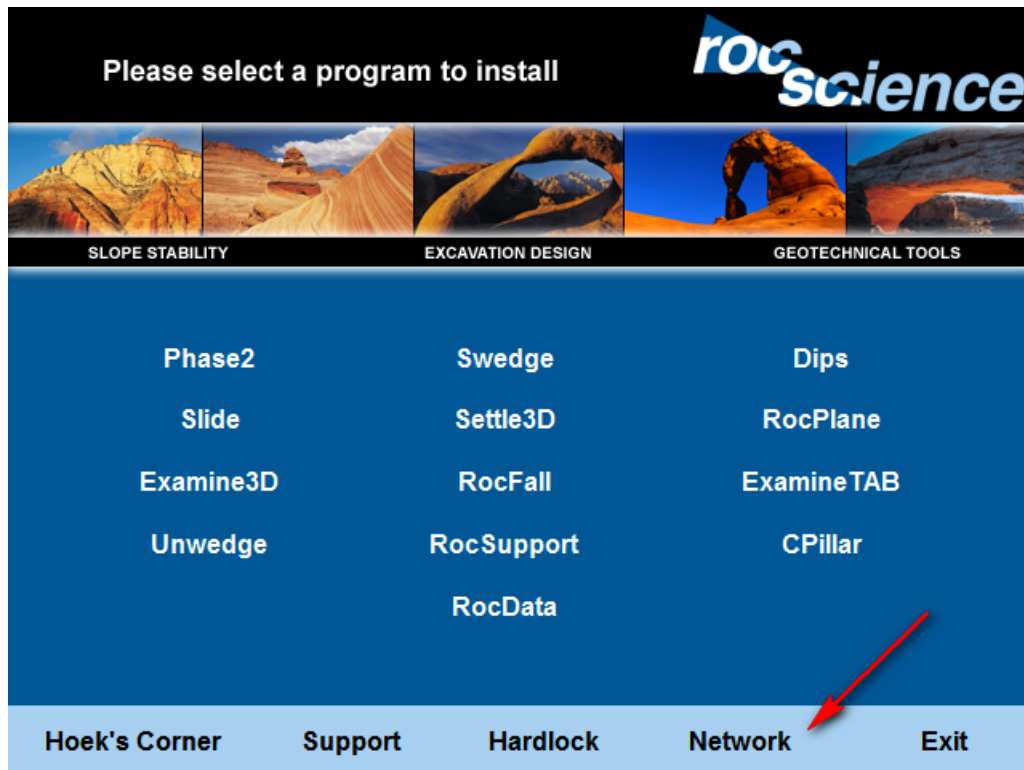
When the application runs on the client it also creates network semaphore files in the shared folder on the server. These files all end with the extension .net. The network semaphore files are used to count the number of clients currently running the software for licensing purposes. As a result, **the client must be able to write to the shared folder on the server.**

## 2. Server Installation Instructions – No previous install

This section describes the steps required to install the server configuration utility on the network server. This section is not for people upgrading or renewing their current network installation. This section is for new customers who have just purchased the Rocscience network version of the software and do not have any Rocscience software installed on the server.

The server can be any Windows XP/Vista/Win7/2003/2008 computer that can share a folder so that other Windows based computers on the LAN/WAN can gain access the license file contained in this folder through a UNC path. Basically the client, through Windows Explorer, should be able to navigate to the folder on the server containing the license file.

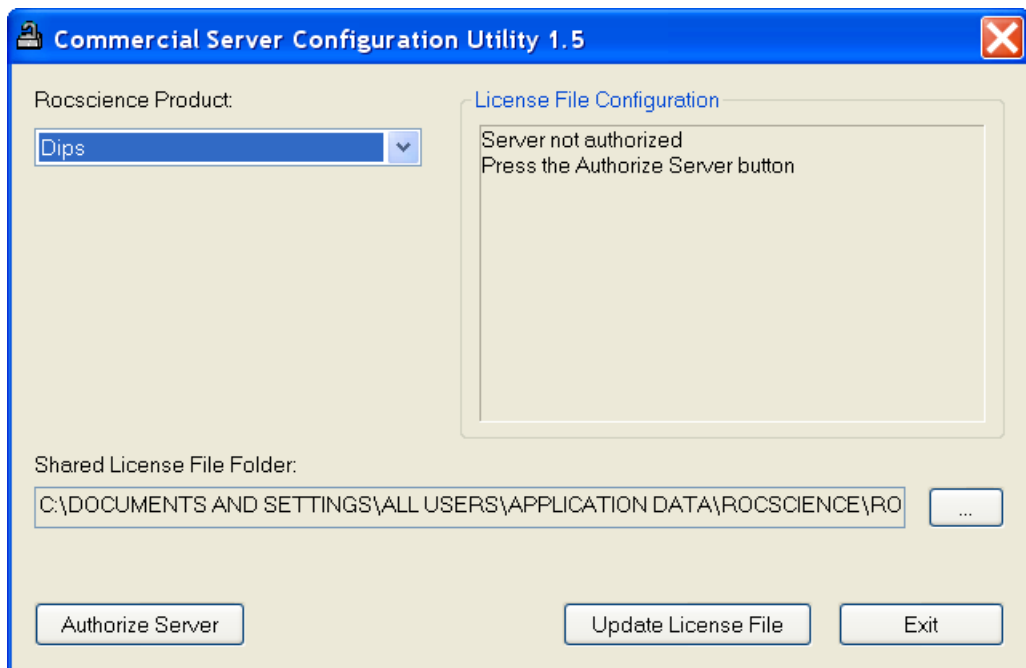
1. Log on with administrator privileges on the server.
2. Download the Rocscience CD using the link supplied by Rocscience. Unzip the archive to a folder on the server. Open this folder in Windows Explorer.
3. Run setup.exe and wait for the following main installation screen to appear.



4. Select the Network option at the bottom of the screen (see above).
5. Select the Server Configuration option.

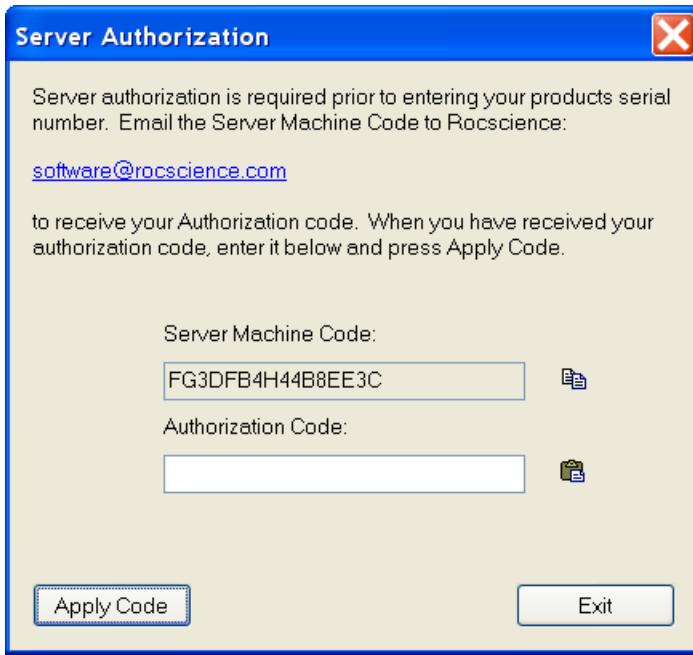


6. Complete the installation of the Server Configuration Utility.
7. Run the **Commercial Server Configuration Utility** through the Rocscience Start menu. You'll see the following dialog appear.

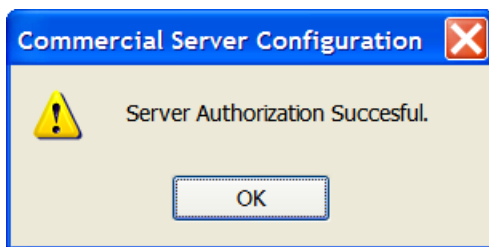


8. The first step is to authorize the server as being able to serve the license files. Press the **Authorize Server** button.

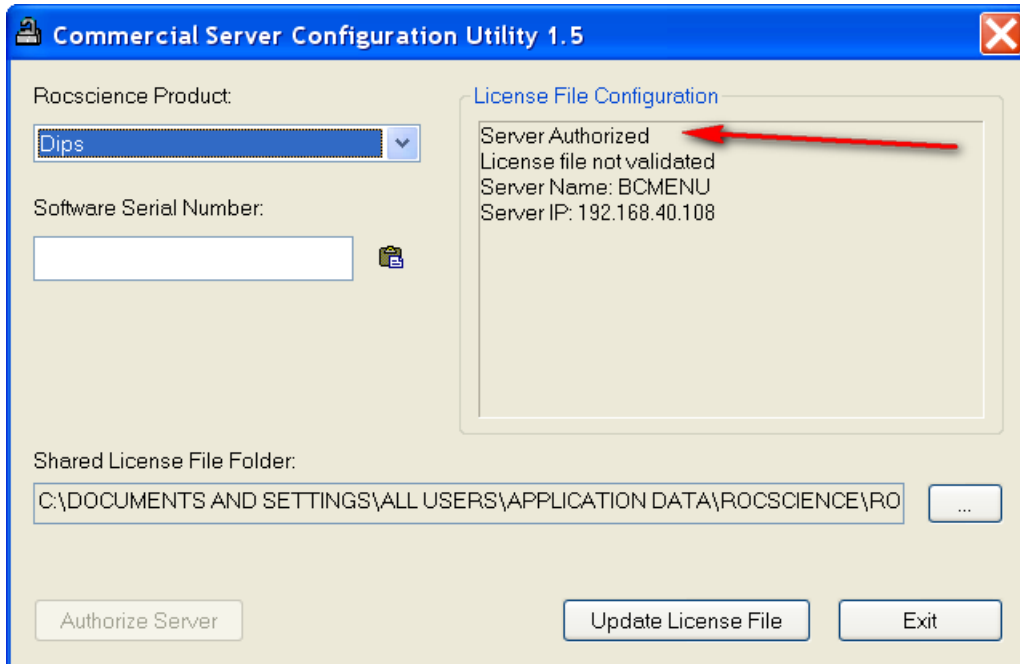
9. You'll see the following dialog appear (with a different Machine Code!). Email the Server Machine Code to Rocscience using the link in the dialog or email it to [software@rocscience.com](mailto:software@rocscience.com). Rocscience will email you back the Authorization code. Until you get the Authorization Code, you can shut down the Server Configuration utility.



10. When you receive the Authorization code, repeat steps 7 and 8 and enter the code in the above dialog. Press the Apply Code button. You should see the following dialog.



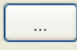
11. Press OK and then Exit in the Server Authorization dialog. Look in the License File Configuration information box (see below), you should see that the server is authorized.

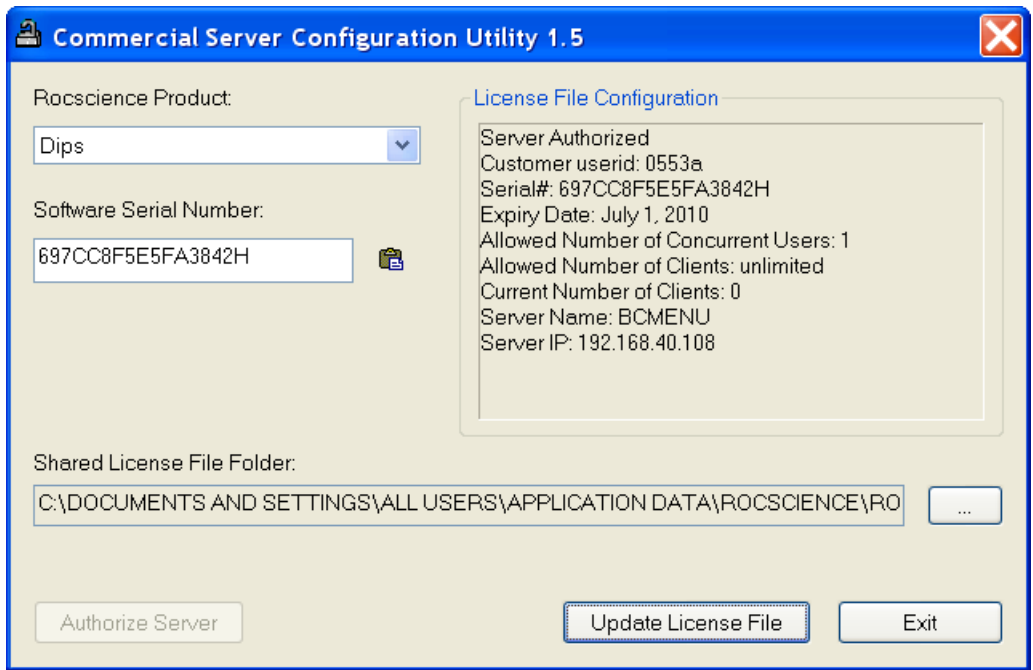


12. Now choose your Rocscience Product using the combo box in the top left corner of the dialog. Enter the products Server serial number. This is the serial number that starts with the number 6. DO NOT enter the client serial number. Press the Update License File button. Your license information should now be listed in the License Configuration area.
13. Follow step 11 for all Rocscience products then exit the configuration utility.
14. The above process creates a folder, by default:

**%COMMONAPPDATA% \ROCSCIENCE\ROCSCIENCE LICENSE FILES**

This folder contains license files for all Rocscience products. Only Rocscience products that you have defined serial numbers for (see step 11 above) will have valid license files. You now have a choice. The clients must access (read/write/modify) these license files. So you can either share this folder for use by the clients or create a folder somewhere else and share it. Note that the clients must have read, write, and modify privileges on this shared folder. Almost all of the problems encountered by customers are a result of this folder not having the correct permissions.

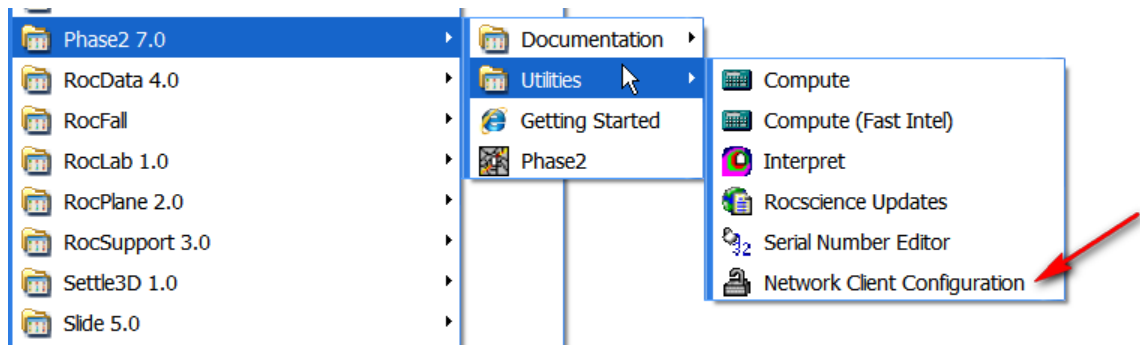
15. If you wish to use another folder for the license files, do so by changing the Shared License File Folder option in the Server Configuration Utility. Use the Navigation button  to choose or create the folder (see below). This folder must have read, write, and modify privileges by the clients.



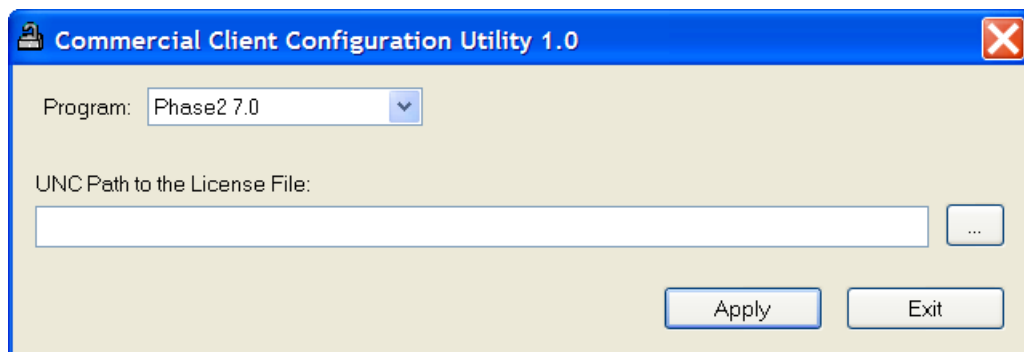
### 3. Client Installation Instructions

This section describes the steps required to install Rocscience software products (i.e. Dips, Slide, Phase2) on a client. This assumes that the network administrator has successfully installed the Server Configuration Utility and has properly shared the license file on the server (see Server Setup Instructions). The network administrator will have given you the path to the license file on the server.


1. Obtain the path to the license file on the server from your network administrator. This must be a UNC path that the client uses to access the license file on the server. You should be able to see the license file by using Windows Explorer to navigate to the shared folder on the Network Server.
2. Log on with administrator privileges on the client. Uninstall any previous versions of the Rocscience software product installed on the client.
3. Install the software product on the client. During installation you will be asked for a serial number. Enter the **Client** serial number that was shipped with your Rocscience product. This serial number will start with the number 7. Make sure you **DO NOT** use the server serial number that starts with the number 6.
4. In your Rocscience products Start Menu, there will be a Utilities folder. Inside this folder there is a program called Network Client Configuration (see below). Run this program.



You should see the following dialog appear:

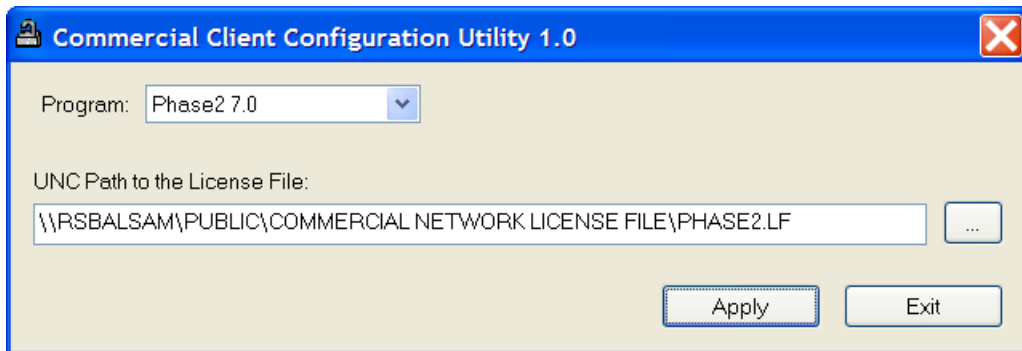


To run the software on the client you are required to locate the license file on the server. The license file is in the shared folder on the server. Make sure the Program is correct. If not, change the Program to the correct Rocscience software package. Press the button to the right of the path

edit box  to navigate to the folder on the server containing the license file. The path to the license file should be a UNC path of the form:

\\COMPUTER\_NAME\SHARE\_NAME\...\FILE.LF

Select the license file. Press Open. Press Apply in the Commercial Client Configuration Utility dialog. If you have done everything correctly you should see a dialog saying that client is properly configured. Exit the Client Configuration Utility.



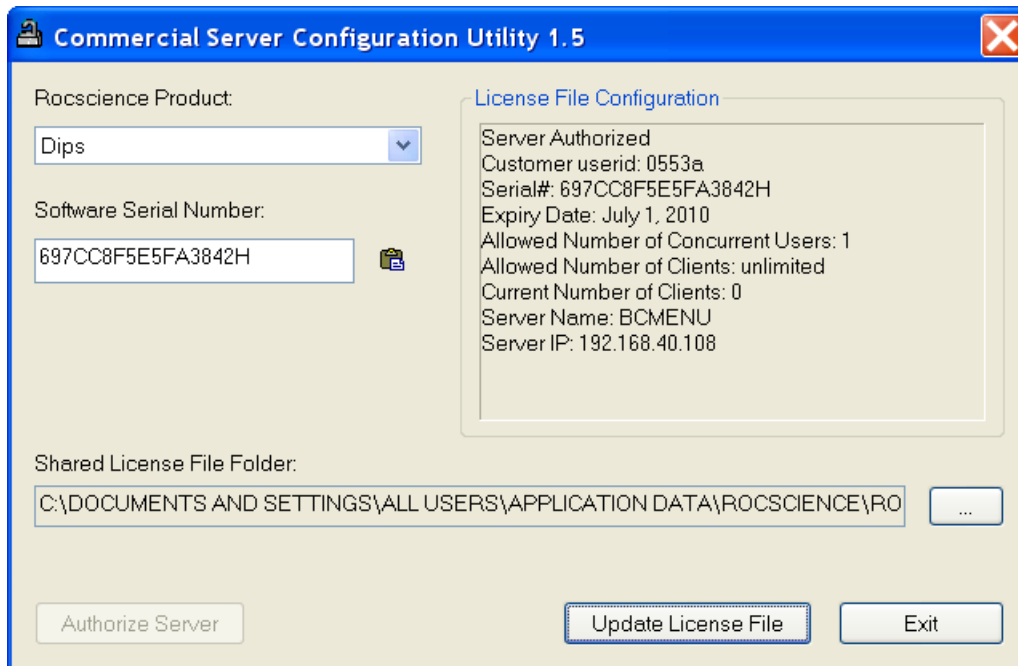
5. Run your Rocscience software.

## 4. Renewing a Subscription on the Server

At the completion of the subscription period, a dialog will appear when you try and run the software asking you to renew your license. If you have renewed your license, Rocscience will have sent you a new Server serial number for your Rocscience product. As the server administrator you will be required to enter the new serial number into the Server Configuration Utility.

### *Entering a new serial number into the Server Configuration utility*

1. Run the Commercial Server Configuration utility on the server by going to the Rocscience Start Menu. If the Commercial Server Configuration utility is not installed, follow the instructions in sections 2 (Server Installation Instructions – No previous install) and section 3 (Client Installation Instructions). You may also send Rocscience your license file and we'll manually update it for you and send it back.
2. In the Server Configuration Utility, change the Rocscience Product to the product which you are trying to update, and enter in the server serial number provided to you by Rocscience (note: the server serial number always starts with the number 6). Then press the Update License File button. The License File Configuration area should update to your new license information.



## **5. Major Product Upgrades on the Client**

During the course of your subscription, major product upgrades will be released by Rocscience. For example Slide 5.0 to Slide 6.0. This does not include minor program updates (say Slide 6.001 to Slide 6.002) that are supplied for free through the automatic updates feature of the Rocscience product.

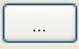
If the previous version of the product being upgraded is no installed on the client, go to section 3 (Client Installation Instructions).

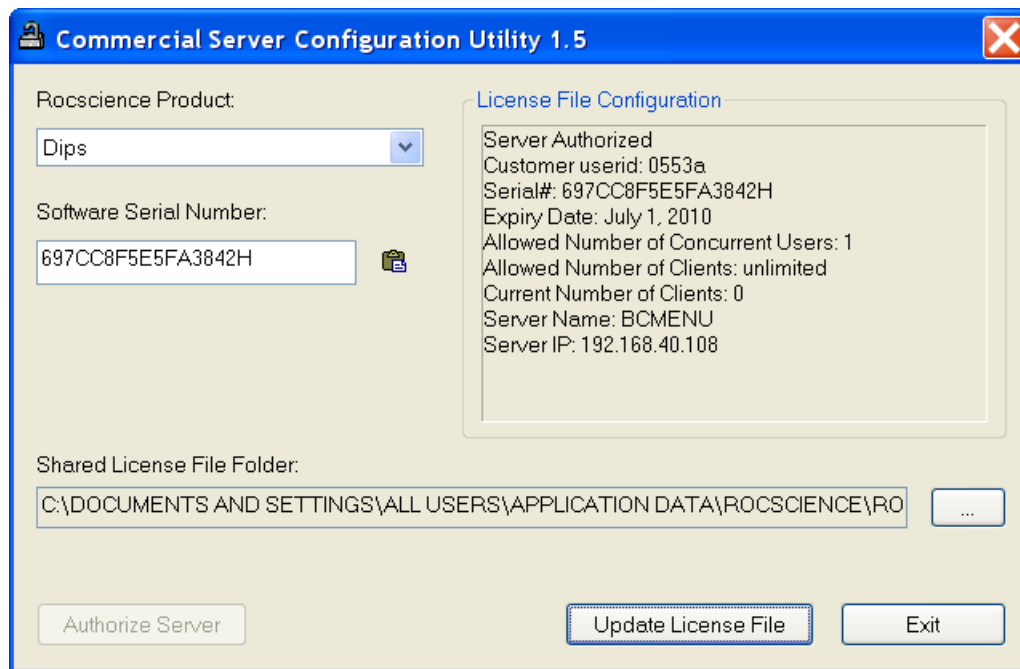
If the previous version of the product being upgraded is installed on the client, simply download the installation program using a link supplied by Rocscience. Run the installation program on the client. The software should now run on the client.

Previous versions of the product will remain installed on the client and you will still be able to run them.

## 6. Adding a Product to an Already Working Network Installation

If your company has a network installation working with a Rocscience product, and you purchase another product from Rocscience, this is how you install the new product.

1. Run the Commercial Server Configuration utility on the server by going to the Rocscience Start Menu.
2. In the Server Configuration Utility, change the Rocscience Product to the new product you just purchased and want to get working. Enter in the server serial number provided to you by Rocscience (note: the server serial number always starts with the number 6). Then press the Update License File button. The License File Configuration area should update to your new license information.
3. If you wish to use another folder for the license files, do so by changing the Shared License File Folder. Use the Navigation button  to choose or create the folder (see below). This folder must have read, write, and modify privileges by the clients. The license file must also have read/write/modify privileges by the clients. To simplify the process, we suggest you use the same license file folder as your other Rocscience products.
4. Exit the Server Configuration Utility.



5. Install the software on the client using the instructions in section 3 – Client Installation Instructions.

## 7. Migrating to a New Server

If your company is changing servers and you wish to migrate your Rocscience license to the new server, the easiest method is to follow the instructions in Section 2 - *Server Installation Instructions – No previous install* on page 4 of this document. You will be required to send a Machine Code to Rocscience. You do not have to migrate the Rocscience license files from the old server to the new server. Following the process in Section 2 will create new license files on the new server.